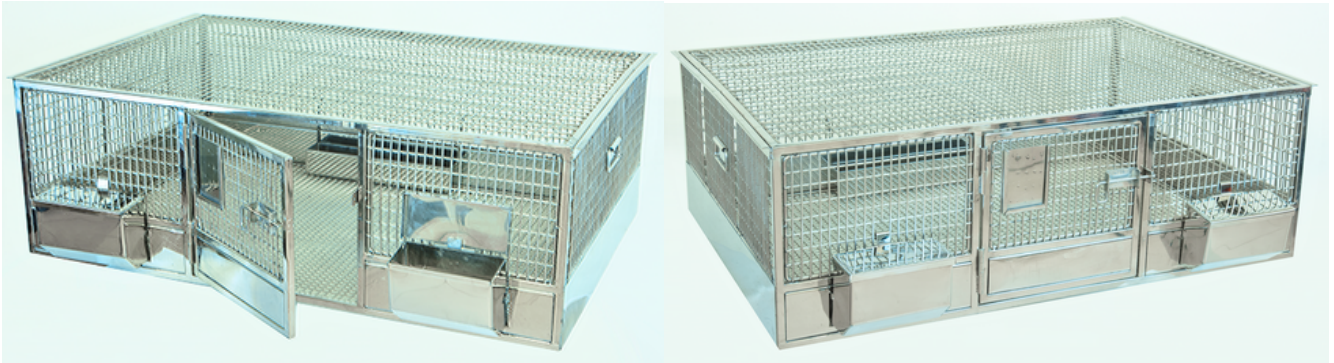


Quail Cage

The Japanese quail (*Coturnix japonica*) has been a popular animal model in numerous fields of research. Orchid has designed special cages for housing of Quail suiting to laboratory and research application.



Made from complete AISI S.S. 304 quality material

Overall Dimensions: 900X600X300mm (LXWXH)

The frame is made from 12.7x12.7x1.5mm S.S. 304 square pipe

Food Hopper: Supplied with two J-shaped food hoppers of 22swg.

WATER DRINKING

Supplied with specially designed water system of dimensions 300x50x50mm made from 1.5mm thick S.S. 304 sheet material.

DOOR

The door is fitted with label holder and has dimensions of 343x275mm.

Top, front and side grills are made from 3mm & 5mm S.S. 304 bars and have gap of 10x43mm

Both sides are fitted with handles for ease of holding during the shifting of cages.

Floor grill is made from 2.5mm and 3mm S.S. 304 bar with gap of 10x10mm

TRAY DIMENSIONS

928x597x75mm, Made from S.S. 304 sheet of 0.8mm thickness. Tray has to be placed in the trolley below the mounted cage.

FLOOR SPACE

5031 sq. cm

TROLLEY FOR QUAIL CAGE

Sliding-type trolley suitable to hold 3 cages of size 900X600X300mm along with trays.

Made from S.S.304 square pipe of 25x25x1.5mm and angle of 25x25x2mm

OVERALL DIMENSIONS:

995x650x1600mm

Trolley is supplied with four castor wheels out of which two are with brake and two are without brakes.

ORDERING INFORMATION

Product Name	Model	Accessories Supplied
Quail Cage	QC-01	<ul style="list-style-type: none">• Cage with floor grill-1• Water drinking system-1• Food hopper-02• Excreta trya-1
Trolley for Quail cages	QC-T-01	Trolley with 4 castor wheels



Orchid Scientific & Innovative India Pvt. Ltd.

📍 B-59, M.I.D.C., Ambad, Nashik - 422010, India.

☎ +91253-2387600, 2972525

✉ office@orchidscientific.com, exports@orchidscientific.com

🌐 www.orchidscientific.com

